

# Urban Trees of Guam

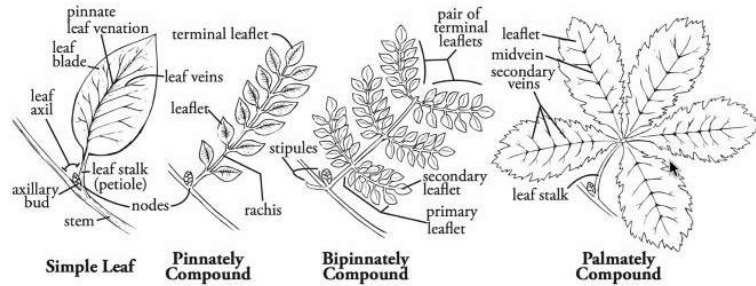
Identification and Assessment  
Guide



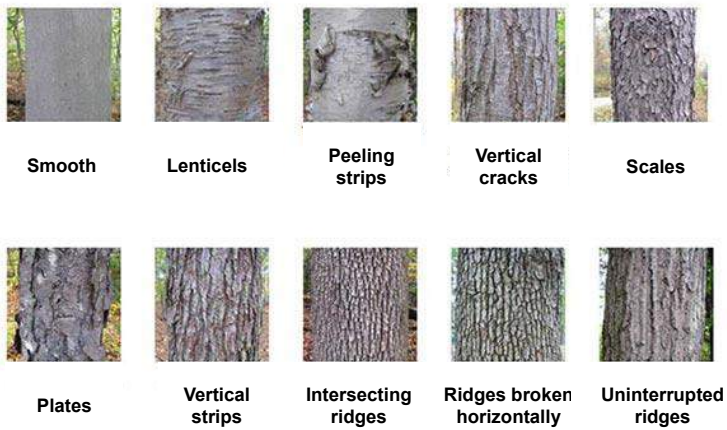
# Identification Characteristics



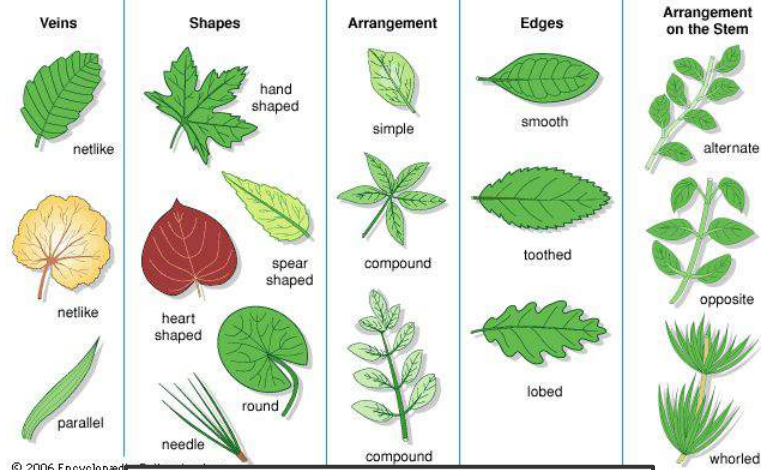
(From left to right: Coconut, Manila, Fiji Fan, Alexander, Aiphanes, Pygmy Date, Royal)



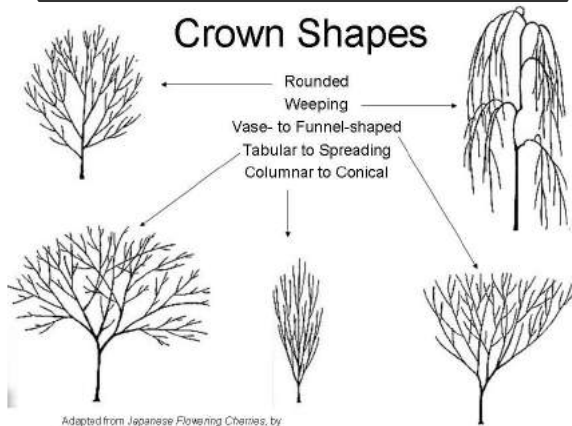
## Palm Trunk Examples



## Leaf Morphology



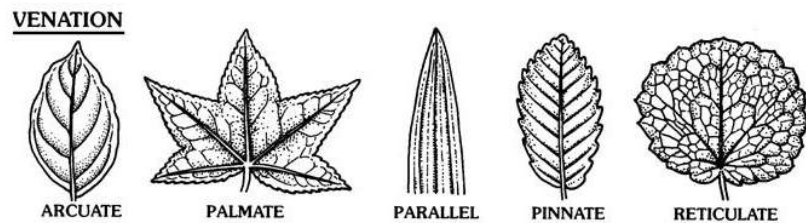
## Bark Examples



Adapted from Japanese Flowering Cherries, by Wybe Kuitert, Timber Press, 1999

## Crown Shapes

## Leaf Morphology



## Leaf Venation

## Other Tools:

1. Use the [Pacific Island Dichotomous Tree Key](#)
2. Complete an [Unidentifiable Tree Form](#)

# Assessment Guide

## Common Name:

Dead/Stumps, Unknown if uncertain.

## Number of Stems:

Does stem come from the ground?

From ground=stem

From stem=branch

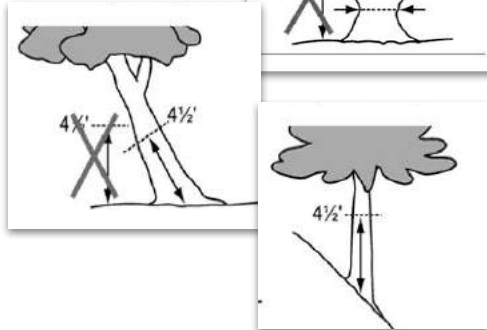
Use your best judgement.



## DSH:

Multistems: Take DSH of each stem at 4.5ft, calculate in TreePlotter.

Use area that best represents DSH if abnormal at 4.5ft.



## % Dieback:

Dieback is from the EDGES of the crown.

It is an indicator of root problems.

What is NOT dieback:

- empty branches with buds
- branches under the canopy that die from lack of light

## Live Crown ratio:

Use the shaka!



Do Ratio when collecting height measurement

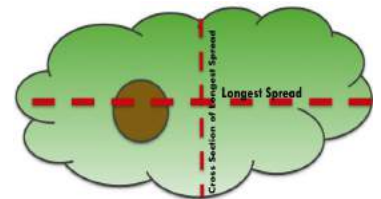
## Height:

Palms: Measure to the *bottom* of fronds.



## Crown Spread:

Perpendicular drip lines.



Use pace or horizontal feature on hypsometer if in a difficult space.

## Condition:

based on crown method

**GOOD**

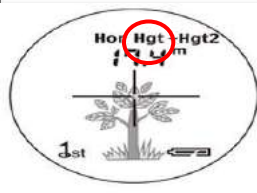
If the defect level for all of these categories, collectively, is **less than 15%**

**FAIR**

If the defect level is **between 15-50%**

**POOR**

If the defect level is **greater than 50%**

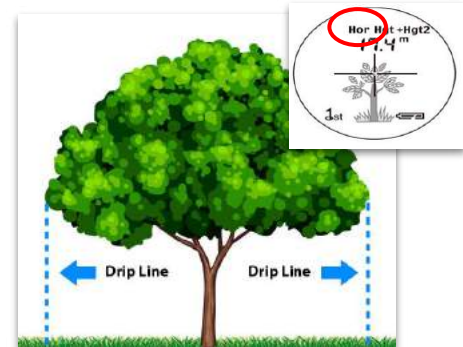


Use best estimate if the hypsometer is not calibrated.

Use people's height or nearby buildings to estimate.

**Wires:** Conflicting if wires are within 10 ft of tree

**Growth Space:** Park is usually bare soil



## Deciduous leaf loss

How to record:

- Record measurements the way they are **present at the time you are observing** them.
- Indicate "Deciduous leaf loss" in comment

## Common Deciduous Trees

Plumeria	Narra
Gold tree	Crepe Myrtle
Royal Poinciana	Monkeypod
Ficus (partially)	Wiliwili





**BETEL NUT - *Areca catechu***

**Stem:** Trunk grey with conspicuous closely spaced rings, **Leaves:** 1-pinnate "palm fronds," with short petioles and a basal sheath that surrounds the trunk, **Flower:** enclosed in boat-like sheath that opens into a much-branched yellowish green inflorescence up to 30 cm long



**FORMOSAN KOA - *Acacia confusa***

Invasive **Stem:** rough, both singular & multi-trunked common **Leaves:** 4" long narrow, curved, parallel veins, waxy, leathery, alternately; smaller than true koa **Flowers:** at end of stem, balls of yellow 1/2" **Seed:** flat, green to brown linear spiral-like pods 4"



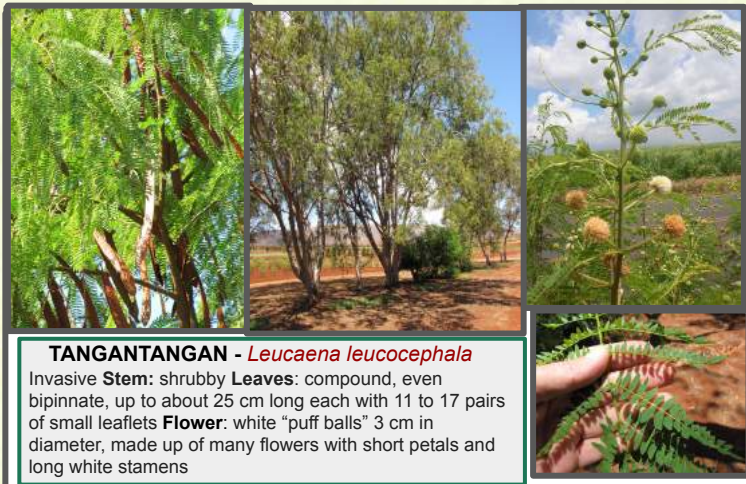
**PUA KENIKENI - *Fagraea berteriana***

**Stem:** grey-brown, **Leaves:** leaf blades thick, mid-rib raised on surface, petioles flat or convex, **Flower:** fragrant flowers, funnel-shaped corolla, **Fruit:** ellipsoid or globular and orange/red in color



**GEOMETRY/JUCARO - *Bucida buceras***

**Height:** 40-50ft **Stem:** smooth, dense crown **Leaves:** simple, obovate, pinnate, dark blue-green, leathery, 2-4" long, clustered at branch tips **Fruit:** oval, 1/2", black



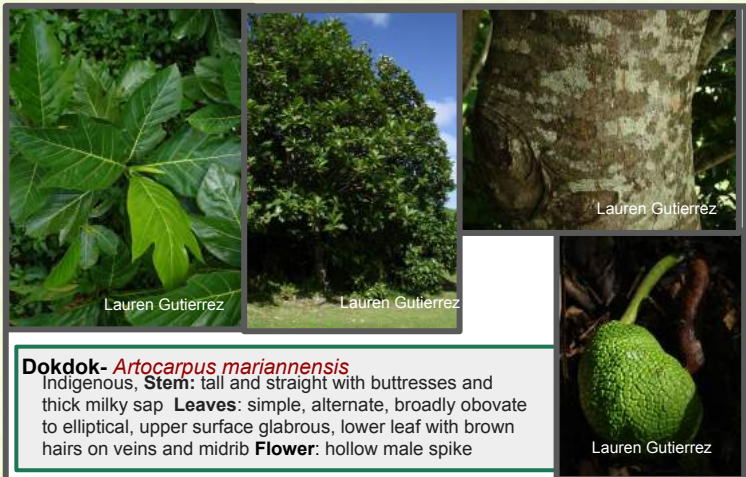
**TANGANTANGAN - *Leucaena leucocephala***

Invasive **Stem:** shrubby **Leaves:** compound, even bipinnate, up to about 25 cm long each with 11 to 17 pairs of small leaflets **Flower:** white "puff balls" 3 cm in diameter, made up of many flowers with short petals and long white stamens



**PUTING- *Barringtonia asiatica***

indigenous, **Stem:** stout branches, gray bark, **Leaves:** Simple, entire, crowded at branch ends, long and leathery, obovate, dark green and shiny, **Flower:** large fragrant flowers, four white petals and a mass of white stamens that are pink at the tips and united at the base



**Dokdok- *Artocarpus mariannensis***

Indigenous, **Stem:** tall and straight with buttresses and thick milky sap **Leaves:** simple, alternate, broadly obovate to elliptical, upper surface glabrous, lower leaf with brown hairs on veins and midrib **Flower:** hollow male spike



**bilimbi, pickle tree - *Averrhoa bilimbi***

**Stem:** multiple trunks and crown made up of numerous rosettes of pinnate leaves, **Leaves:** compound, 1-pinnate with odd leaf at tip, light to medium green with young leaflets tinged reddish **Flower:** attached to stems and trunk, red and white



**SILVER TRUMPET - *Tabebuia aurea***

Often Deciduous **Stem:** crooked, usually 2-3 trunks, thick bark **Leaves:** palmately compound, long w/ 5-7 leaflets, each 2-7" long, green with silvery scales both above & below. **Flowers:** bright yellow, 2-3" diameter, clustered in loose panicle **Fruit:** slender 4" long capsules



**TAMARIND/ KALAMENDO' - *Tamarindus indica***

**Height:** 15-20ft **Stem:** single trunk **Leaves:** dense crown, alternate, pinnately lobed, elliptic-ovular, close in the evening like monkeypod **Flowers:** inconspicuous red, yellow elongated flowers, 1" **Fruit:** Distinctive long, brown, hard shelled legume, pod-like, fleshy edible inside



**TREE WISTERIA - *Bolusanthus speciosus***

Semi-Deciduous, not to be confused with jacaranda **Stem:** brown-grey, rough, deeply fissured, low drooping branching **Flowers:** Distinctive Purple, pea-like in bunches **Seed:** Flowering followed by papery brown fruit pods, hang in clusters, never split **Leaves:** spirally arranged.



**KOU/ NIYORON - *Cordia subcordata***

**Stem:** straight, erect, groove/fissures, flaky, pale grey bark **Leaves:** large, smooth, oval-shaped, alternate, wavy edges, blunt-pointed ends, visible veins, shiny tops, dull bottoms **Flowers:** clusters, scentless, bright orange, funnel-shaped, 5-7 wrinkled petals **Fruit:** dark, woody



**TULIPWOOD - *Harpullia pendula***

**Height:** ~20ft **Stem:** irregular, fluted, grey & scaly bark **Leaves:** dense crown, pinnate, alternate, 3-8 leaflets, short, blunt-pointed tip, visible veins & raised midrib on both sides **Flower:** panicles, greenish-yellow 1/2" diameter **Fruit:** 2 lobed capsule, yellow or red, 2 shiny dark seeds



**WEST INDIAN MAHOGANY - *Swietenia mahagoni***

Deciduous in drought **Height:** up to 50ft **Stem:** often short trunk, multi-branched, buttressed **Leaves:** pinnate, compound w/ 4-8 leaflets 2-2.5" long **Flower:** white to greenish, small, 5 petals **Seed:** flowering followed by large, brown pod 2-4" long



**WHITE TECOMA - *Tabebuia berteroi***

**Height:** ~20-30 ft **Leaves:** palmately compound, oval, 3-5 leaflets, 2.5" long, smaller than pink tecoma, dull, dark green leathery upper w/ lighter scaly underside **Flowers:** pale magenta-white, bell-shaped blooms 1-2" long **Fruit/Seed:** elongated pods



**YELLOW POINCIANA - *Peltophorum pterocarpum***

Deciduous **Stem:** straight, cylindrical, sometimes buttressed **Leaves:** bipinnate, 10-25" long, 20 pinna w/ 20-40 oval leaflets **Flower:** yellow, large compound racemes, 8" long **Fruit:** pod 2-4" long, start red, black when ripe, 1-4 seeds





**AFRICAN MIMUSOPS - *Mimusops caffra***  
**Stem:** twisted, dark grey bark, wrinkled longitudinally.  $\leq 50$  cm (20 in) DSH **Height:** 12–82ft **Leaves:** alternate, hard, leathery, rounded tips. **Flowers:** white star-like, 0.39–0.79" in bunches **Fruits:** .59–1" long, fat, roundish to oval, red or orange-red when ripe



**OPIUMA - *Pithecellobium dulce***  
**Height:** 30-49ft **Stem:** spiny **Leaves:** bipinnate, single pair or ovate leaflets, 1-1.5" long **Flowers:** greenish-white, fragrant, coiling, sessile, 4.7" length **Fruit/Seed:** Flowers produce pod, pink when ripe, opens to expose seed, black shiny seeds



**AFRICAN YELLOWWOOD - *Afrocarpus falcatus***  
**Conifer Height:** +100ft **Stem:** flaky, ridged, grey-brown to reddish, trunk can reach ~3-10ft wide **Leaves:** spirals, small, narrow, 1.5" long, leathery, waxy **Cones:** male cone is brown spiral scales, 1-6" long, female cone 1 scale with 1 greenish grey round seed <1" long



**PAPERBARK - *Melaleuca quinquenervia***  
**Height:** 30-70ft **Stem:** conspicuous white-beige-grey papery flaky bark **Leaves:** grey-green, egg-shaped **Flowers:** arranged in spikes at end of branches, 5-18 groups of 3 flowers, white-cream **Fruit:** woody, cylindrical capsules .2" clustered



**AFRICAN TULIP TREE - *Spathodea campanulata***  
**Stem:** greyish, furrowed, rough bark **Leaves:** glossy, pinnate, compound, 18" long, 7-19 oval leaflets 4-6" long; new leaves bronze becoming green, light green underside **Flower:** Clusters of velvet brown claw-like buds, 5" long trumpet shaped red-orange flowers



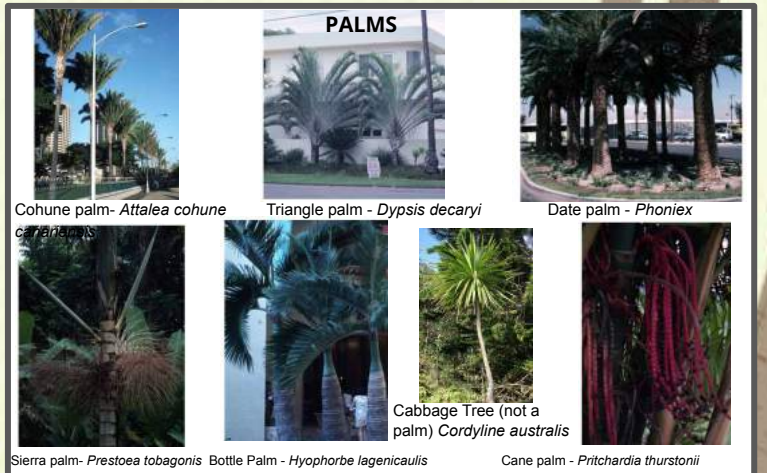
**PINK TECOMA - *Tabebuia heterophylla***  
**Height:** ~20-30 ft **Leaves:** palmately compound, oval, opposite, 2-4" **Flowers:** pink-white, bell-shaped blooms in spring/summer followed by seed pods **Fruit/Seed:** brown, elongated dry pods



**ALBIZIA - *Falcataria moluccana***  
**Invasive, high risk, fastest-growing tree species in the world** **Stem:** smooth, light, white-tan **Flower:** cream-white small **Leaf:** twice pinnately compound wide spreading, flat crown, large, long branches (**City should be made aware if albizia are in city area**)



**PALMS**



Cohune palm - *Attalea cohune*

Triangle palm - *Dypsis decaryi*

Date palm - *Phoenix*

Sierra palm - *Prestoea tobagonis*

Bottle Palm - *Hyophorbe lagenicaulis*

Cabbage Tree (not a palm) *Cordyline australis*

Cane palm - *Pritchardia thurstonii*



**ALEXANDER/KING PALM - *Archontophoenix alexandra***

**Stem:** one light-grey trunk, smooth, circular marked multi-colored **Leaves:** large, stiff, feather-shaped, pinnate, dark-green top, silvery bottom **Fruit:** round, bright red when ripe **Flower:** creamy-white below crown shaft



**NIYOK / COCONUT PALM - *Cocos nucifera***

Indigenous **Stem:** slender, leaning, ringed, swollen base **Leaves:** giant, pinnate, feather-like, downward facing **Fruit/Seed:** coconuts, 12-18" in length, thick fibrous husk **Flower:** creamy-white, yellow, elongated clusters 4' long



**ALLSPICE - *Pimenta dioica***

Evergreen tree **Stem:** highly branched, commonly ~30cm **Height:** 20-40ft **Leaves:** 3-6" long oblong, leathery, aromatic **Flowers:** Creamy white in panicles. **Fruits:** drupes 1/4", green, in clusters



**FALSE ASHOKA / MAST - *Polyalthia longifolia***

**Height:** ~30ft **Stem:** yellow-white, light soft bark straight trunk, willow-weeping branches **Leaves:** juvenile leaves: coppery brown, soft, delicate; Older leaves: light turning dark green, lance-shaped, wavy edges **Fruit:** clusters, 10-20 green to purple-black. Can be pruned into narrow form



**BAOBAB - *Adansonia digitata***

Deciduous and Large **Stem:** girthy trunk, bottle-shaped, smooth, shiny bark **Leaves:** simple, digitate, 5-9 dark green glossy leaflets **Flowers:** large, heavy, white, open for 1 night, multiple stamens, die in 24 hours. Biggest recorded Baobab at UH Manoa



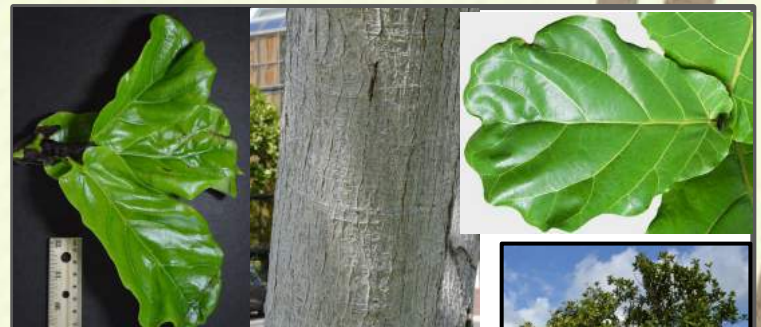
**FALSE WILIWILI - *Adenantha pavonina***

Deciduous **Stem:** slightly buttressed, greyish brown bark **Leaves:** bipinnately-compound, 2-6 pairs of leaflets **Flowers:** 2mm, star-shaped, white to dull orange **Fruit:** Seedpods thin, curved, green to mature woody black, coiled, splitting **Seeds:** 12 shiny red, hard, lens-shaped



**BENJAMIN FIG (BANYAN) - *Ficus benjamina***

Weeping Fig **Stem:** bark is thin, greyish, drooping branchlets **Height:** large, 45ft-60ft **Leaves:** thick, glossy, 2-5", oval, acuminate tips, some curly edges, alternate, simple leaf **Fruit:** red figs



**FIDDLELEAF FIG - *Ficus lyrata***

Epiphyte (in the crown of another tree) **Height:** up to 30-50ft **Leaves:** distinctive - lyrate, variable, broad apex, narrow middle, resemble a fiddle, up to 18" long leathery, **Fruit:** green fig, but rarely bloom in HI





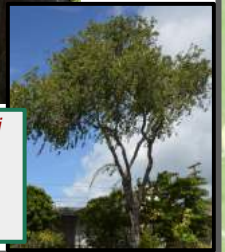
**CHINESE BANYAN - *Ficus microcarpa***

Epiphytic **Stem:** smooth, light-gray bark, aerial roots, thick trunk **Height:** ~40ftt (world's tallest in Kauai 110ft!) **Leaves:** variable, coriaceous, oblong, elliptic to broadly elliptic or obovate **Fruit:** Sessile, depressed pyriform 8x10mm **Seeds:** less than 1mm



**ALIBANGBANG (ORCHID TREE) - *Bauhinia hookeri***

**Stem:** often multi-trunked, flaky bark **Leaves:** compound, 2 leaflets, sessile, round **Flowers:** white, 5 petals, long red anthers/stamens **Fruit/Seed:** flowering followed by flat pods containing multiple seeds



**GRAPE MYRTLE - *Lagerstroemia indica***

Deciduous **Stem:** Pinkish-grey, papery mottled, sheds yearly **Height:** <25ft **Leaves:** small, smooth-edged, circular, oval, dark green to yellow in autumn **Flowers:** bright cone-shaped, crimped petals in panicles, 3 1/2"



**AUTOGRAPH TREE - *Clusia rosea***

Epiphytic **Height:** 30-60ft **Flowers:** 3", 6-8 broad round petals, last <24 hours **Seed:** 3" diameter seed capsules. Dried, split into thick flower-like segments, w/ red seeds **Leaves:** thick, leathery, dark green, opposite, egg shaped



**FALSE OLIVE- *Cassine orientalis***

**Height:** up to ~60 ft **Stem:** twisted, irregular **Leaves:** opposite, simple shiny, narrow, red mid-rib, smooth edges | adult leaves wide, oval, serrated margin **Fruit:** resembles small olives, green while maturing to dark brown



**BEACH HELIOTROPE - *Tournefortia argentea***

Coastal tree found at 0-50ft elevation **Stem:** light brown, dark grey, deeply corrugated **Height:** ~20ft **Leaves:** simple, alternate, silvery gray sheen, silky 4-122" in length **Flowers:** small white sessile, arranged in multi-branched cymes. 0.24" in diameter **Fruit:** small, smooth .3" long



**FERN TREE - *Filicium decipiens***

**Height:** ≤98ft **Stem:** smooth, whitish bark **Leaves:** glossy, alternate, 5-10 pairs of narrow long leaflets up to 6" long, wavy margin **Flowers:** narrowly paniculate, 5 sepals, 5 yellow petals **Fruit:** elliptical, drupe-shaped, turns shiny purple when mature with 1 seed



**BE-STILL TREE - *Cascabela thevetia***

Poisonous, evergreen tree, Yellow oleander **Leaves:** alternate, willow-like, linear, lanceolate, glossy, waxy **Flowers:** 3" long funnel-shaped, fragrant yellow. **Fruits:** dark red black, large seed 1" diameter. All parts of tree are toxic







**JACK-IN-THE-BOX - *Hernandia nymphaeifolia***

**Stem:** light wood **Height:** over 16ft **Leaves:** narrow, broadly ovate, subcircular 5-9 veins are palmate  
**Flowers:** white or greenish, fragrant **Fruits:** fleshy, waxy red or white **Seeds:** round, brown



**GOLD TREE - *Roseodendron donnell-smithii***

Deciduous with vase-shaped crown **Height:** up to ~80 ft  
**Leaves:** simple, 3-7 leaflets **Flowers:** bright yellow, clusters at branch ends, flowers when tree is leafless  
**Seed:** thin, flat, surrounded by papery wing, elongated pods 9-19" long



**DAOG - *Calophyllum inophyllum***

Canoe plant **Stem:** twisted, low-branching, rough grey bark **Height:** ~20-60ft **Leaves:** dense foliage, +5 veins, irregular crown, large stiff, shiny, blunt tip, yellow-green midrib **Flowers:** 1" paniculate, 4-15 flowers, flower perennially **Fruits:** round, green drupe, 1-1.6", large seed



**HONG KONG ORCHID - *Bauhinia X blakeana***

Hybrid originating from Hong Kong in 1880 **Height:** 20-40ft **Stem:** often multi-trunked, drooping branches  
**Leaves:** large, thick, double-lobed, heart-shaped, butterfly-shaped, 3-4" long **Flowers:** striking purple-pink, fragrant, 4-6" across, white anthers **Fruit/Seed:** none!  
 Hybrids are sterile



**LUMBANG CANDLE-NUT - *Aleurites moluccana***

Canoe plant **Stem:** DSH up to 36" **Height:** <50-80ft **Leaves:** silvery-pale green, simple, ovate, or trilobed sometimes five-lobed **Nut:** round, 1.5-2.5" diameter **Flowers:** terminal cymes, 10-15cm long. 5 creamy-white petals surrounded by smaller flowers



**INDIAN CORAL TREE - *Erythrina variegata***

Deciduous **Height:** ~30-50ft **Stem:** fluted trunk, thick, sappy, some spiked **Leaves:** alternate, pinnate, 3' leaflets, 8" petiole, some variegated **Flowers:** showy, dense racemes 8-10" long, red, deep split, claw-like **Fruit:** narrow pod, 4-6" long **Seeds:** kidney-shaped, redish



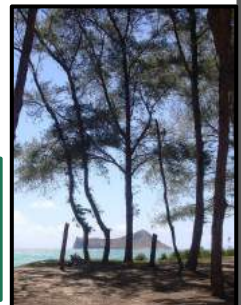
**LIGNUM-VITAE - *Guaiacum officinale***

"Tree of Life" Listed as Endangered by IUCN **Stem:** ~24in DSH **Height:** ~33ft **Leaves:** compound, 1" in length **Flowers:** Blue, 5 petals **Fruits:** bright, yellow-orange with red flesh & black seeds



**GAGO (IRONWOOD) - *Casuarina equisetifolia***

Invasive **Height:** ≤100ft **Stem:** rough, grey-brown, flaky; drooping branches **Leaves:** Tiny, scale-like, in whorls of 6-8, 9-15" long, pine needle-like **Flower:** light brown, tiny inconspicuous **Fruit:** rounds, 1/2-3/4" wide, hard, warty, pinecone-like, brown





**GOLDEN SHOWER - *Cassia fistula***

**Height:** ~33-66ft **Stem:** slightly droopy branches  
**Leaves:** pinnate, compound leaves, 4-8 pairs of leaflets, 3-8" long **Flower:** Small, yellow flowers in racemes, flowers 1-3" long w/ 5 petals **Seed:** distinctive long, brown seed capsules w/ several seeds | Not to mistake for **Rainbow Shower**



**JACARANDA - *Jacaranda mimosifolia***

Can be Deciduous **Height:** 20-50ft **Flower:** Distinctive Clusters of purple, fragrant, trumpet-shaped in 12" terminal panicles **Leaves:** fern-like, bipinnate compound leaves up to 20" long **Seed:** 2" flat wispy



**AGGAK - *Pandanus tectorius***

**Native Height:** ~15-30ft **Stem:** conspicuous prop roots, prickly stems **Leaves:** sword-like, 2-6ft long, sharp toothed margins, some variegated **Flower:** males produce highly fragrant, cream-white flowers **Fruit:** conspicuous pineapple-shaped



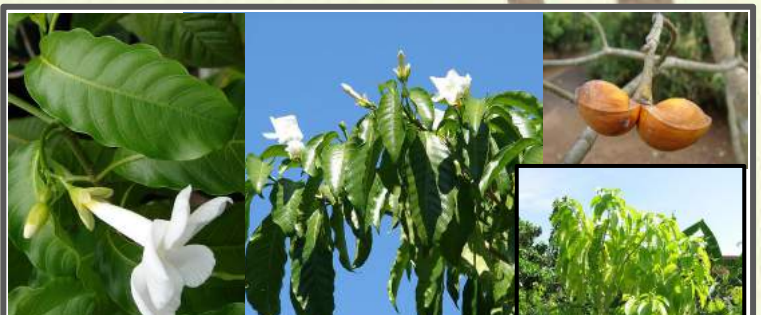
**KIAWE - *Prosopis pallida***

Deciduous **Stem:** Bearing spines, irregular, often crooked, DSH <25", corrugated **Leaves:** twice compound, gray-green, 6-15 pairs per pinna **Seed:** elongated seedpod, 10 - 25cm long **Flowers:** fluffy, yellow, arranged in elongated clusters, 5-14cm



**INDIAN BANYAN - *Ficus benghalensis***

**Stem:** aerial roots turn to woody trunks, large trunks, wide spreading crown **Height:** up to 100 ft **Leaves:** ovate to elliptic, prominent veins **Flowers:** monoecious **Fruits:** paired in leaf axils, red to orange when ripe



**LECHOSO - *Stemmadenia littoralis***

**Height:** 25ft **Leaves:** oval, glossy, large, visible veins, wavy edges **Flower:** tubular white, very fragrant **Seed:** distinctive pods, double horned, orange, split when mature



**INDONESIAN CINNAMON - *Cinnamomum burmannii***

**Stem:** average 5-15" DSH, aromatic bark, smooth, angular branches **Height:** <25ft **Leaves:** glossy, green, oval 4" long, 1.5" wide **Flowers:** Small yellow **Fruits:** dark drupes.



**LOOKING GLASS TREE - *Heritiera littoralis***

**Stem:** pinkish/whitish-grey bark, smooth, flaky/fissured w/ age **Leaves:** spirally arranged, stalked leaves, leathery, stiff, egg-shaped, wavy, dark green above, silvery white to brown underside, 4-15cm **Flowers:** dull purple, bell-shaped, yellow clusters **Fruit:** woody, shiny, flattened

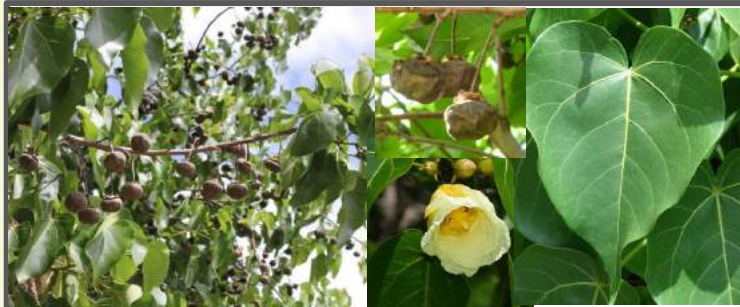




**MADAGASCAR OLIVE - *Noronhia emarginata***  
**Stem:** smooth bark, flattened terminal twigs **Leaves:** simple, leathery, opposite, elliptical, 6" long, yellow veins; dense crown **Flower:** small yellow fragrant, 4 lobed corolla **Fruit:** greenish-yellow, turning dark purple



**RED SILK COTTON TREE - *Bombax ceiba***  
**Deciduous Stem:** straight, spikes, tall **Flowers:** red, 5 petals, cup-shaped, **Seed:** numerous, long, ovoid, black or gray in colour and packed in white cotton. Capsule when ripe contains white fibers like cotton



**BINALO - *Thespesia populnea***  
 Indigenous **Height:** ≤33ft **Leaves:** spirally arranged, stalked, leathery, triangular heart-shaped, distinct yellow veins **Flowers:** bell-shaped, solitary, yellow w/ maroon center **Fruit:** brown capsules, round to pear-shaped, 1-5cm across, can split into 5 parts



**ARBOL DEL FUEGO - *Delonix regia***  
**Stem:** large, buttressed trunk, horizontal branches **Leaves:** bipinnately compound, feathery, 20-40 pairs of leaflets, 10-20 pairs of secondary leaflets **Flowers:** large, 4 spreading red petals, 3" long, 5th upright petal spotted w/ yellow-white **Fruit:** pods, green to dark-brown & woody



**MORETON BAY FIG - *Ficus macrophylla***  
**Stem:** can be massive, thick buttressing, ~8ft diameter, grey-brown, blemished bark, aerial roots **Height:** can reach 200 ft **Leaves:** large, elliptic, alternate, leathery, dark green top, brownish underside, 6-12in long **Fruits:** small, round, greenish, purple when ripe



**SAUSAGE TREE - *Kigelia africana***  
**Stem:** wood is pale brown, yellowish, undifferentiated, spreading branches **Height:** up to 66ft **Leaves:** opposite or in whorls of 3, 12-20", long, pinnate, 6-10 oval leaflets **Flowers:** panicles, bell-shaped, orange-maroon 4" turn into fruit. **Fruits:** up to 2ft long, weigh 15lbs, looks like sausage



**NORFOLK PINE - *Araucaria heterophylla***  
 "Living Christmas Tree" (although not a true pine) Distinctively symmetrical **Stem:** Tall, straight, widely spaced horizontal branches, grey-brown scaly bark **leaves:** awl-shaped **Cones:** squat globose, 10-12 cm long



**SILVER BUTTONWOOD - *Conocarpus erectus***  
**Height:** 15-20ft **Stem:** usually multi-trunked, dark brown, ridged, scaly bark **Leaves:** simple, alternate, oblong, pinnate, 2-4", silver-blue-green color, silky hairs **Flowers:** small, green in dense cone-like heads **Fruit:** flowering followed by 1/2" cone-like red-brown fruits





**RAINBOW SHOWER - *Cassia x nealiae***

**Height:** ~33-66ft **Stem:** slightly droopy branches **Leaves:** pinnate, compound leaves, 4-8 pairs of leaflets, 3-8" long  
**Flower:** Small, often multi-colored, pink to yellow in racemes  
**Seed:** none! Hybrids distinctively have no seeds or pods unlike Yellow showers



**MANILA PALM - *Adonidia merrillii***

**Stem:** grey, circular leaf scars, evenly spaced **Leaves:** large, pinnate, compound, arched upwards, leaflets droop down, light green crown shaft **Fruit:** Large bunches ovoid drupes, green turn red w/ maturity  
**Flower:** grouped in 3, in long branches. More compact than Royal Palm



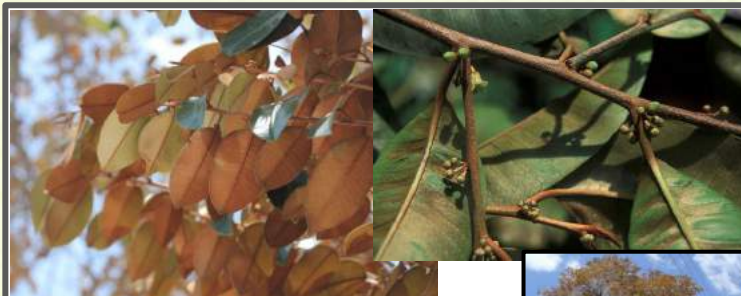
**RED BOTTLEBRUSH - *Callistemon citrinus***

**Height:** <20ft **Stem:** fibrous, papery bark **Leaves:** hard, alternate, 1-4" long, flat, narrow, egg-shaped, narrower near base, visible veins & oil glands on both sides **Flower:** distinctive brush-like red, spikes, 2-4" long, 30-45 stamens **Fruit:** woody, cup-shaped



**MONKEYPOD - *Albizia saman***

Semi-deciduous **Stem:** crooked, wide spreading branches, yellow-grey-brown, smooth bark **Height:** ≤100ft **Leaves:** bipinnately compound, velvety w/ 4-8 leaflet pairs, opposite, fold/shrink in rain & evening  
**Flowers:** white below, pink above in leaf axils, fine hairy  
**Pods:** straight 1-2cm long



**SATIN LEAF - *Chrysophyllum oliviforme***

**Height:** 10-30ft **Stem:** usually 1 trunk, thin gray-brown bark w/ fissures **Leaves:** simple, alternate, ovate, shiny, dark green on top, light brown on bottom, distinctive coloring **Flowers:** small, creamy yellow, 5 petals, 5 stamens, **Fruit:** small light green turning dark purple w/ several black seeds



**NARRA - *Pterocarpus dalbergioides***

Semi-deciduous, listed as Vulnerable **Stem:** straight, cylindrical w/ ascending branches, buttressed roots, corrugated bark **Leaves:** alternate, pinnately compound, 5-9 leaflets **Flowers:** small, yellow, panicle at branch-ends

**Fruit:** flat, round, winged w/ single kidney-shaped seed



**PAGO (SEA HIBISCUS)- *Hibiscus tiliaceus***

**Height:** 13-33 ft **Stem:** natural form is a bramble, can be pruned into tree form, Intertwined trunks & branches **Leaves:** simple, heart-shaped, 8" long, pointed tip, hairy underside sometimes variegated **Flowers:** funnel-shaped, 5 overlapping petals, lasting only one day



**OCTOPUS TREE - *Schefflera actinophylla***

Epiphytic, Weedy **Height:** ≤40-49ft **Stem:** usually multi trunked **Leaves:** alternate, palmately compound, 7-8 leaflets **Flowers:** top of tree, 3ft wide flower clusters, racemes <6.5ft long, 1000 small red flowers, octopus like. Similar to Trumpet, but green underleaf not white (Trumpet)





**FIJI FAN PALM - *Pritchardia pacifica***

**Height:** 10-20ft **Stem:** one trunk, fiber pattern at base, smooth, ~20" DSH **Leaves:** palmate, fan-shaped, 7'x6', no spines along petioles **Fruit:** green spherical, turn red then black when ripe, single seed **Flower:** fragrant, brownish, growing among leaves



**IFIT- *Intsia bijuga***

Indigenous, "Territory" tree of Guam **Height:** 22-40ft **Leaves:** stalked pinnate compound leaves, typically with 2 pairs of thin leathery leaflets oppositely arranged, alternate, ovate. **Flower:** petals are usually white with a red center, may be pink, red. Flowers have distinctive green sepals



**GEIGER TREE - *Cordia sebestena***

**Stem:** naturally multi-trunked, droopy branches **Leaves:** dark green, leathery, alternate ovate 7" long, wavy margins; smaller, rougher than True Kou **Flowers:** clusters, tubular, flaring, 2" wide; darker than True Kou **Fruit:** pear-shaped fleshy, white, fragrant



**TEAK - *Tectona grandis***

**Leaves:** simple, opposite, ovate-elliptic and very large, 30 to 75 cm long by 15 to 40 cm wide, pubescent **Flowers:** in large panicles 30 to 50 cm long, flowers on very short stems, white or pink. **Fruit:** drupe 3 cm wide by 1.5 cm thick.



**CHINESE FAN PALM - *Livistona chinensis***

**Height:** 30-50ft **Stem:** upright; showy trunk; single leader; no thorns **Leaves:** spiral arrangement, star-shaped leaf, palmate venation **Flower:** small, white flowers **Fruit:** round black/blue, fleshy



**PALMA BRAVA- *Heterospatha elata***

Invasive, **Height:** ~10m **Stem:** slender, solitary stemmed, roots grow with a boot structure **Leaves:** feathery leaflets, 3-4m long, tapering, dark green **Flower:** small, white flower and fruits



Images Courtesy of: Fairchild Botanical Garden Palm Guide



**RED FRANGIPANI - *Plumeria rubra***

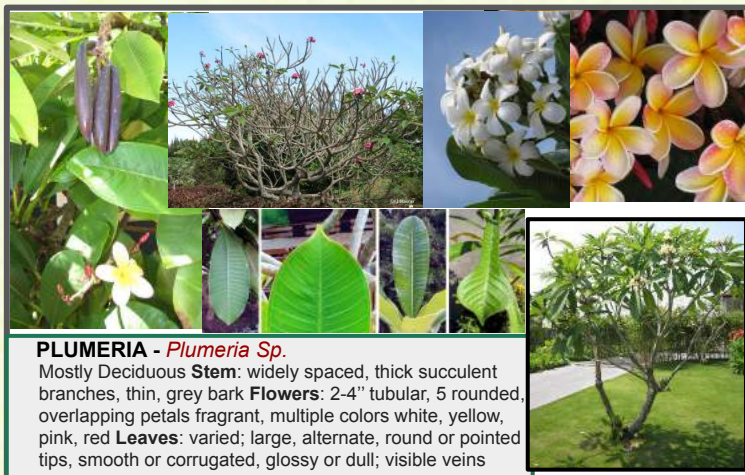
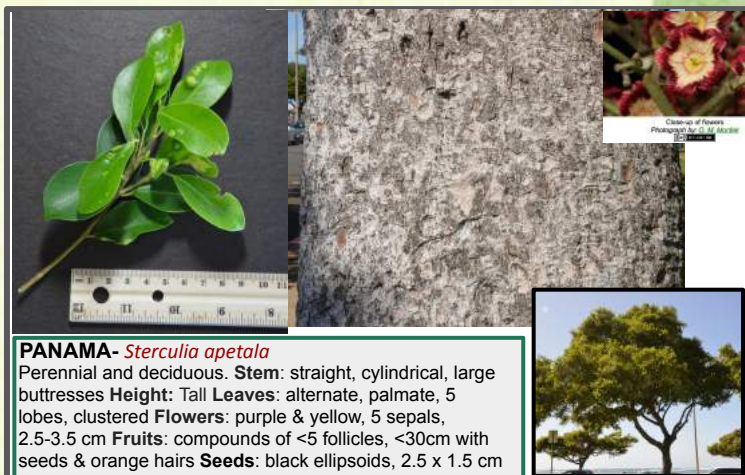
**Height:** 15-25ft **Stem:** fleshy branches, vase-shaped, milky sap, **Leaves:** deciduous, elliptical, dark leaves, undulate margins, **Flower:** fragrant, 5-petaled, pink to red, **Fruits:** doesn't fruit if cultivated variety



**PACIFIC BANYAN or NUNU- *Ficus Prolixa***

Indigenous, **Stem:** many stemmed trunk, prop and aerial roots **Leaves:** opposite, glabrous, oblong, alternate, venation forming boxes, milky sap when broken, **Flower:** formed inside the fruiting body of the plant





# Still Stumped?

This guide is not a comprehensive list of all of the amazing urban trees that can be found in Guam.

Are we missing a common tree in your neighborhood?  
 Still stumped on the correct identification of a tree?

Take a few photos, with a ruler or measuring tape for scale and contact us! [info@kaulunani.org](mailto:info@kaulunani.org)

Images in this guide are courtesy of Tom Foye, Forest & Kim Starr, and UH-CTAHR, unless otherwise referenced. Updated Feb 2021.  
 Designed by Shannon Rivera



In accordance with Federal civil rights law and U.S. Department of Agriculture (USDA) civil rights regulations and policies, the USDA, its Agencies, offices, and employees, and institutions participating in or administering USDA programs are prohibited from discriminating based on race, color, national origin, religion, sex, gender identity (including gender expression), sexual orientation, disability, age, marital status, family/parental status, income derived from a public assistance program, political beliefs, or reprisal or retaliation for prior civil rights activity, in any program or activity conducted or funded by USDA (not all bases apply to all programs). Remedies and complaint filing deadlines vary by program or incident.